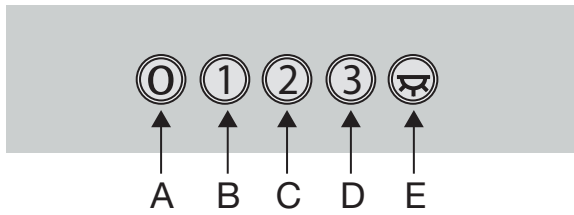


Description



- A. Switching off
- B. Fan speed 1
- C. Fan speed 2
- C. Fan speed 3
- E. Switch the lighting on and off

Operation

Switching on

- Select a fan speed with the buttons 'B', 'C' or 'D'.
Setting 'B' is the lowest setting, while 'D' is the highest setting.

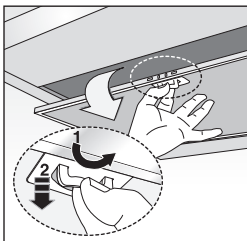
Switching off

- Switch off the cooker hood with button 'A'.

Switching lighting on/off

- Use button 'E' to switch the lighting on or off.

Grease filters



Remove grease filters

- Switch off the mains power! Remove the plug from the socket or turn off the switch in the fuse box.
- Pull the special handle to remove the filter.

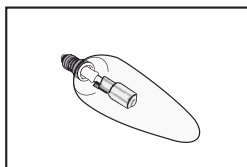
Lighting

Replacing lights



Please note! First cut the power to the appliance by removing the plug from the socket or switching off the fuse in the fuse box.

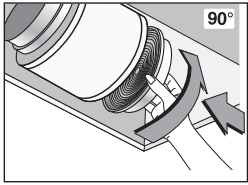
Please note! the lamps can be hot. Use protection if necessary



1. Remove the grease filters.
2. Remove the faulty bulb from the fitting.
3. Replace the faulty bulb with a similar halogen bulb 28W/E14.
4. Insert the grease filters.

If the lighting is not working, first make sure the bulbs have been fitted correctly before contacting the service department.

Carbon filter



Replace carbon filter

Use a carbon filter if the cooker hood is not connected to a outlet duct.

1. Remove the grease filters.
2. Attach the carbon filters to the motor.
3. Insert the grease filters.

Cleaning



Attention! For all maintenance first switch off the mains power to the cooker hood by pulling the plug out of the socket or by turning off the main switch of the electricity network. The hood should be cleaned regularly (at least in the same frequency as the grease filters are cleaned)! Clean both the inside and the hood. Do not use abrasive cleaners. **Do not use alcohol!**

Please note! If these instructions regarding cleaning the appliance or the filters are not followed, this can cause a fire. These instructions need to be strictly observed!

Stainless steel cooker hoods

- Do not use scouring pads or other abrasive cleaners on stainless steel cooker hoods.
- Finish with a non-abrasive, non-polishing agent and buff the stainless steel in the direction of the grain.

Metal grease filters

- Metal grease filters should be cleaned once a month using a neutral cleaning agent, either by hand or in the dishwasher on a short, low-temperature programme.
- Place the grease filters with the openings facing downwards in the dishwasher so the water can drain out of the filter.
- Aluminium grease filters become dull as a result of dishwasher cleaning agents. This is normal and does not affect the working.

Carbon filter

- The saturation of the filter depends on the intensity of use, cooking method and frequency with which the grease filters are cleaned.
- The carbon filter has to be replaced at least every four months.
- Carbon filters cannot be washed for reuse. Saturated carbon is not environmentally friendly, so clean the filter timely.



See the appliance's manual for additional information about operation and maintenance!