

A- Changing The Door Swing Direction to Right Hand

1- Unscrew the two screws fixing the top hinge (Fig-1) and remove the door. (Fig-2)



Figure 1



Figure 2

2- Remove the bottom hinge pin (Fig-3) and insert it to the left side foot. (Fig-4)



Figure 3



Figure 4

3- Remove the top hinge screw caps (big) on the left side (Fig-5) and insert them to the right side. (Fig-6) (You can find the new caps in the user manual bag)



Figure 5



Figure 6

4- Unscrew the pin of the hinge from Hole 1, rotate the top hinge by 180° and screw the pin to Hole 2. (Fig-7)

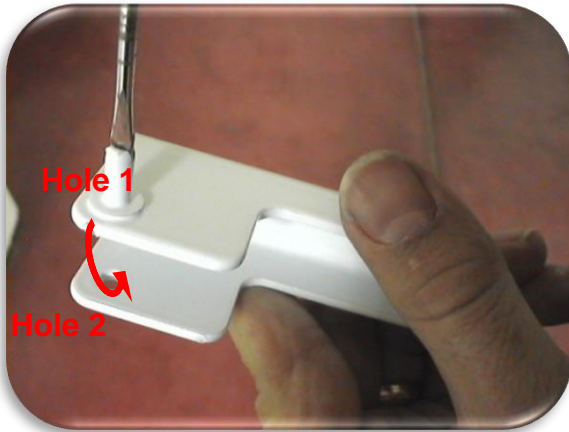


Figure 7

5- Assemble the door and screw the top hinge to the left side. (Fig-8)



Figure 8

B- Changing The Freezer Door Swing Direction

1- Unscrew the screw fixing the freezer door hinge (Fig-1) and remove the freezer door (Fig-2)

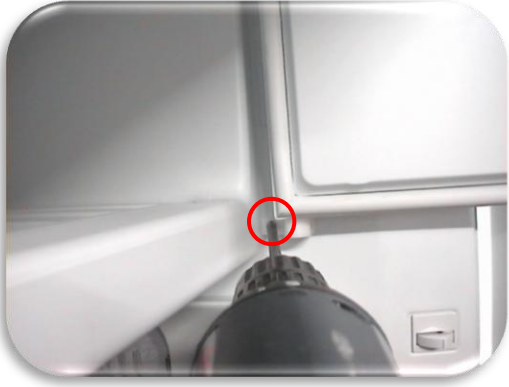


Figure 1



Figure 2

2- Unscrew the screw fixing the freezer door holder and remove it. (Fig-3)

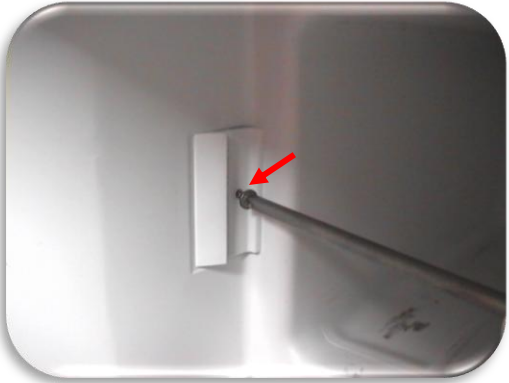


Figure 3

3- Screw the freezer door holder to the right side. (Fig-4)



Figure 4

4- Assemble the freezer door and fix the freezer door hinge by tightening the screw. (Fig-5)



Figure 5

