



Quick and easy: everything you need to know about your dishwasher...  
**You should, however, still read the installation and operating instructions before you use the dishwasher for the first time.**



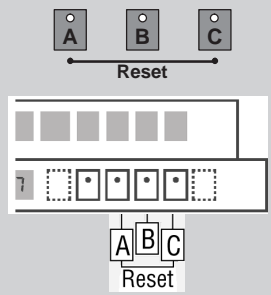
### Set the water softening system \*

Find out the **water hardness** at your water utility company and **enter**

Read off the setting ...

°dH	°fH	°Clarke	mmol/l	Display
0 - 6	0 - 11	0 - 8	0 - 1,1	00
7 - 8	12 - 15	9 - 10	1,2 - 1,4	01
9 - 10	16 - 17	11 - 12	1,5 - 1,8	02
11 - 12	18 - 21	13 - 15	1,9 - 2,1	03
13 - 16	22 - 29	16 - 20	2,2 - 2,9	04
17 - 21	30 - 37	21 - 26	3,0 - 3,7	05
22 - 30	38 - 54	27 - 38	3,8 - 5,4	06
31 - 50	55 - 89	39 - 62	5,5 - 8,9	07

\* only **before using** the dishwasher for the first time or if the **water hardness changes**

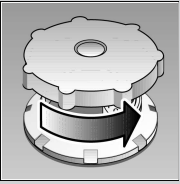


Quickly sorted ... and then set

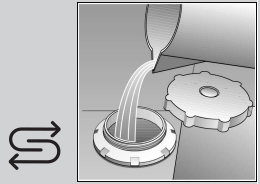
- Hold down programme button **B** and switch on the main switch, then release the buttons. The display of button **B** and the number **4** set by the factory flash.
- Each time button **B** is depressed, the setting increases by one; if **7** has been reached, the display jumps back to **0**.
- Switch off the main switch. The selected setting has been stored in the appliance.

**1** Pour in the water/special salt

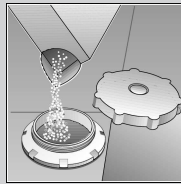
Dissolves limescale (not required for set value 0!)



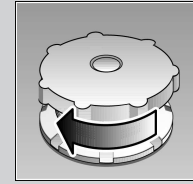
Unscrew the lid.



Only before using the dishwasher for the first time pour approx. 1 l / 2 pt water into the salt opening.



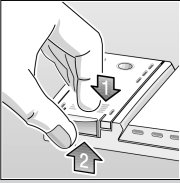
Pour in max. 1.5 kg / 3 lb 5 oz salt (never detergent!)



Screw on the lid. Switch on dishwasher immediately.

**2** Pour in the rinsing agent

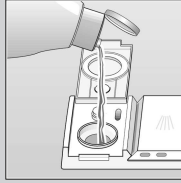
Everything is sparkling clean ...



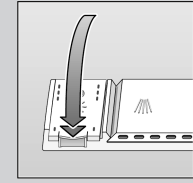
Press mark 1, lift up lid 2.



Refill whenever level indicator is light!



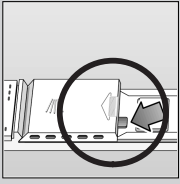
Pour in rinse aid.



Close the lid. CLICK!

**3** Pour in the cleaning agent

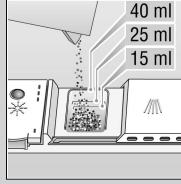
Very dirty dishes, a lot of detergent ...



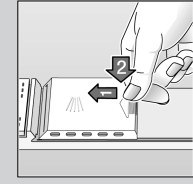
If required, open the lid (press the pin).



**Warning,** combination products are not suitable for all programmes, follow manufacturer's instructions.



Pour in detergent.



Push the lid shut, press. PLOP!

**5** Select the programme

Quick, economical or intensive ...

Programme overview

This overview lists the max. possible number of programmes. The programmes supplied with your appliance are indicated on the fascia.

The programme data are values measured in the laboratory in compliance with Standard EN 50242. Deviations in practice are possible.

	Intensive 70°	Auto 55° / 65°	Eco 50°	Gentle 40°	Quick 45°	Prerinse
Duration in minutes	135	85-140	140	72	30	19
Electricity consumption in kWh	1,60	1,05-1,60	1,05	0,80	0,70	0,05
Water consumption in litres	16	10-17	12	14	10	4
with Aquasensor	13	-	-	12	-	-

### Additional programmes \*\*

**Time selection**  
 ...switches on as soon as you press the time selection button:  
 Alters the programme start in hourly steps

**Saving time (VarioSpeed)**  
 ... is obtained by increased energy consumption at a constant cleaning and drying performance.

**Half load**  
 ... for a few items, saves water, energy and time

\*\* some models

**Switch on the appliance the dishwasher starts...**

Press the on/off switch, the cycle time for the programme selected appears

**Switch off the appliance that's it...**

Press the on/off switch when the indicator shows 0 (programme end)



# Maintenance and care

For perfect rinsing results ...

# Cleaning the waste-water pump \*

**Strainers ...**  
Check, if required, clean

Rotate filter cylinder, remove filter system ...

rinse under flowing water ...

Insert ...

Screw in filter system **NOTE MARK!**

- \* With some models
- Ladle out water and remove filters
- Unscrew cover (Torx T20)
- Check area of fan impeller for foreign objects
- Screw in cover and insert filters

**Spray arms ...**  
Remove blockages/deposits

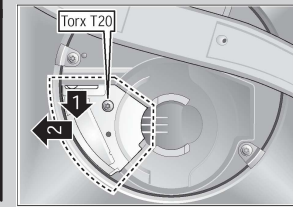
Pull lower arm upwards ...

Unscrew upper arm ...

Clean spray nozzles under flowing water (perhaps with toothpick) ...

Insert lower arm ...

Screw in upper arm



# Rectifying minor faults yourself ...

... as it is worth doing it yourself!

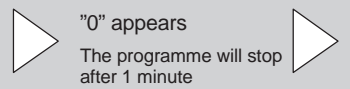
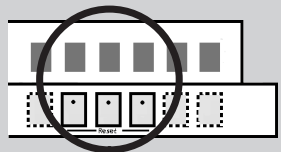
Fault	Possible causes	Remedial action
Residual water in the appliance	Waste water pump blocked The programme has not yet ended	▶ Clean waste-water pump (see above). ▶ Switch on appliance and close or terminate programme (see Terminating the programme).
Appliance is not running / stops Check water supply Display lights up	Supply fitting not open Supply hose kinked Supply fitting jammed or calcified	▶ Open supply fitting. ▶ Install supply hose without kinks. ▶ 1. Unscrew water connection. 2. Clean filter in the water connection. 3. Flow rate must be min. 9 l/min. when water supply is open. If the flow rate is less, replace the supply fitting.
Plastic / utensils discoloured	Too little detergent Discoloration caused by food colourings (tomato sauce)	▶ Follow manufacturer's instructions (detergent). ▶ Discoloration is harmless; subsequent rinse cycles will cause it to fade.
Rust on the cutlery	Cutlery not rust-resistant Hard knife blades are more susceptible Extraneous rust	▶ Use dishwasher-proof cutlery. ▶ Never wash rusting parts in the appliance.

Fault	Possible causes	Remedial action
Utensils are not clean Sand or gritty residue on the utensils	Utensils are situated close together or one above the other Too little detergent Unsuitable programme selected Spray arm nozzles blocked Filters dirty, not seated firmly Spray arms blocked	▶ Separate the utensils, prevent contact points. ▶ Follow manufacturer's instructions (detergent). ▶ Select a more intensive programme. ▶ Clean the spray arms (see above). ▶ Clean the filters (see above). ▶ Arrange the utensils so that the spray arms can rotate freely.
Stains and streaks	Rinse-aid dosage too high / too low	▶ Streaks: reduce dosage. ▶ Water or limescale stains: increase dosage.
Milky film on the utensils (removable) Milky film, glasses cloudy / dull (not removable)	Water softening system incorrectly set; No salt Glasses not dishwasher-proof.	▶ Correctly set water softening system. ▶ Refill with salt. ▶ Use dishwasher-proof glasses. ▶ Use a detergent suitable for glasses.

More information can be found in the operating instructions

# Stopping the programme ...

Press and hold the two reset buttons simultaneously for approximately 3 seconds while the programme is running (RESET)



Switch off the appliance.

# Loading the dishwasher correctly ...

Arrange dishwasher-proof utensils (having removed any ash, wax, grease, ink, sticky labels; remove, large remnants of jam, dairy products and food) according to the operating instructions and check that the spray arms can rotate freely.